

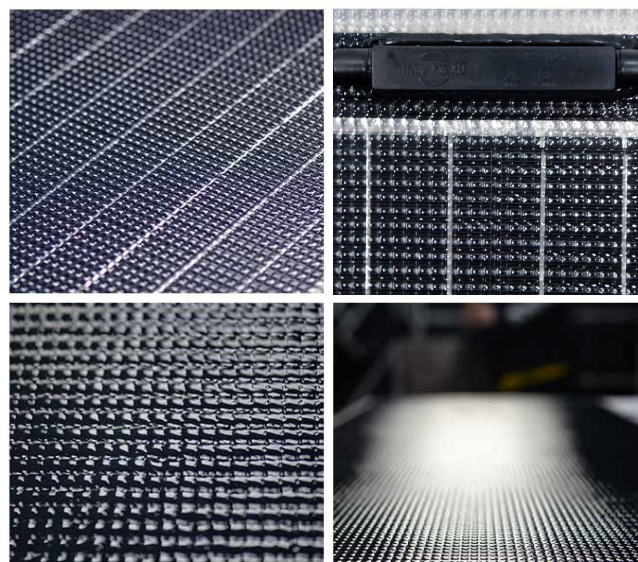
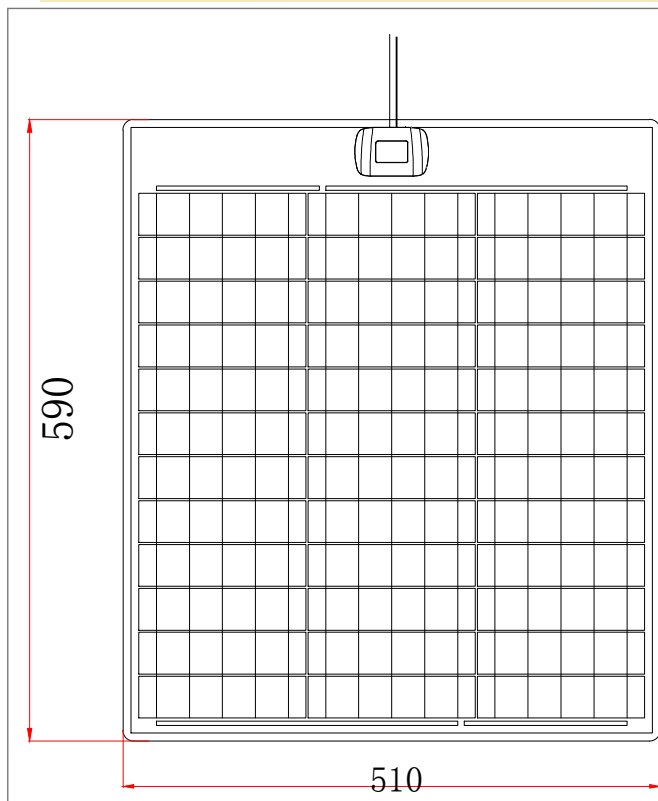
# LEE-50W

Lättvikts flexibel solpanel

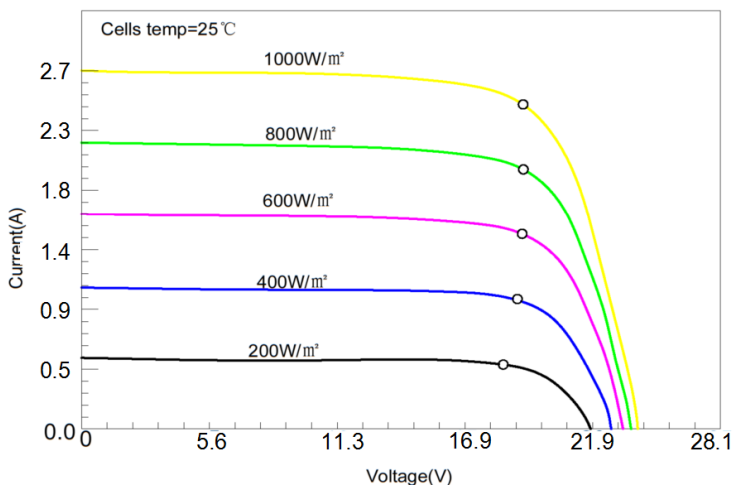


Mått 510\*590\*4mm 50W-20Volt

## SBL Power Supply



— Detaljer —



### Data

Maximal effekt, Pmax	50W
Open-circuit voltage(Voc)	23.6
Voltage at Pmax(Vmp)	20.0
Short-circuit current(Isc)	2.65
Current at Pmax(Imp)	2.50
Cells Efficiency(%)	22.42%
The maximum system voltage	200VDC(IEC)
Power temperature coefficient	-0.43%/°C
Voltage temperature coefficient	-0.34%/°C
Current temperature coefficient	0.05%/°C
Output power tolerance	±3%
Arbetstemperatur	-20~75°C

### Specifikationer

Solar cell brand	A grade solar cells
Antal celler och storlek	36st (3*12)
Mått	510*590*4mm
Kabelbox	IP65/IP67
Garanti	1 år

